



OptiBox

**Q-FIT**<sup>®</sup>



# OptiBox Drawer Series



Standard Drawer



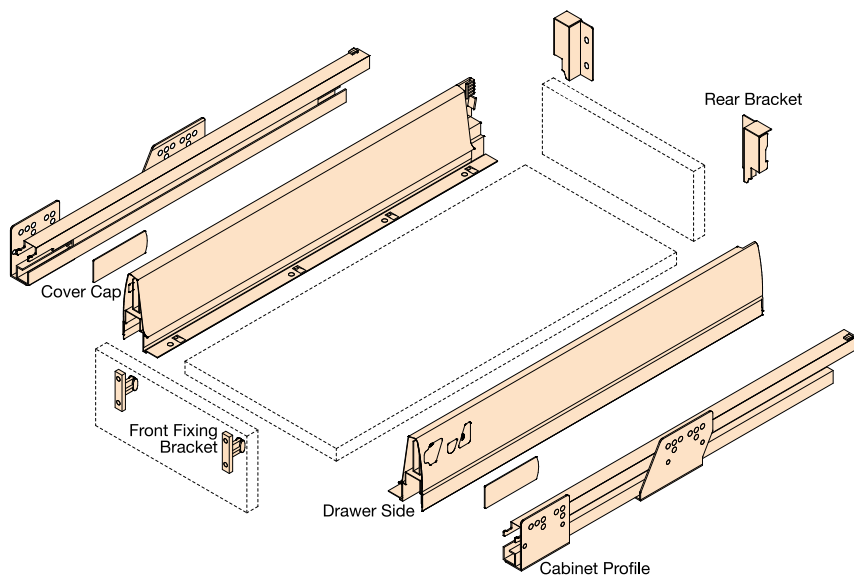
Single Railing Standard Drawer



Double Railing Standard Drawer



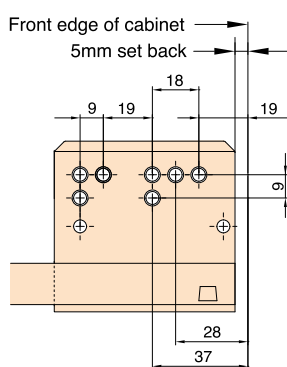
Cross Railing



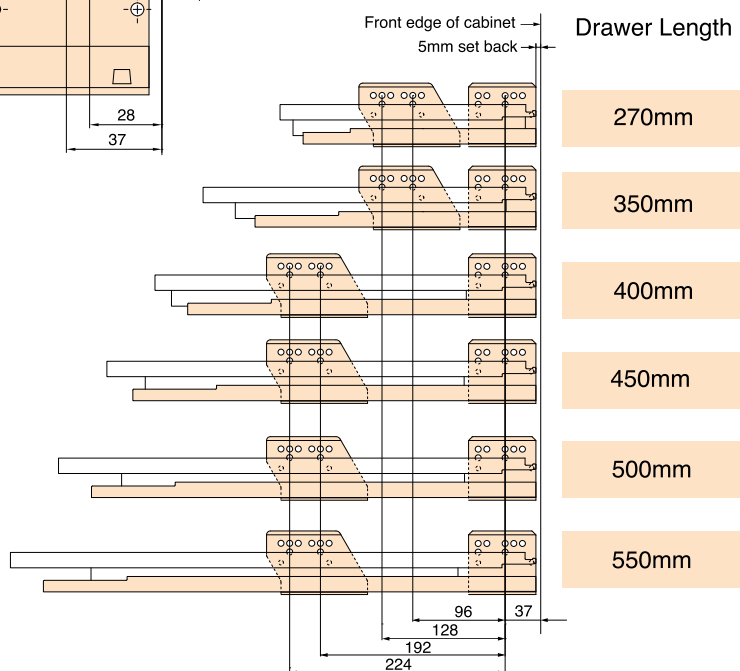
## Standard Drawer

- Full Extension with concealed roller guided runners
- Steel drawer side 82mm
- Load capacity of 40 kg
- Equipped with fast assembly system
- 2-dimensional front adjustment
- Integrated *Impul* for a silent & soft closing motion

## Cabinet Member Fixing Positions

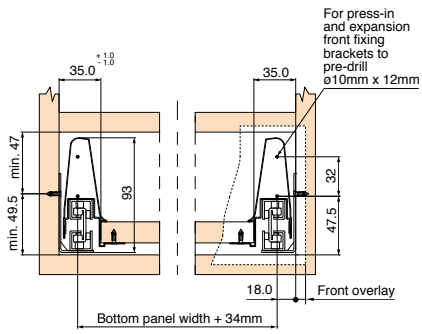


Minimum internal cabinet depth = drawer length + 3mm

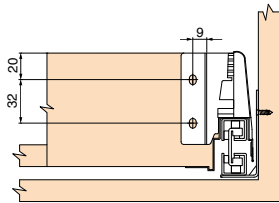


**Standard Drawer**

**Front Installation Dimensions**



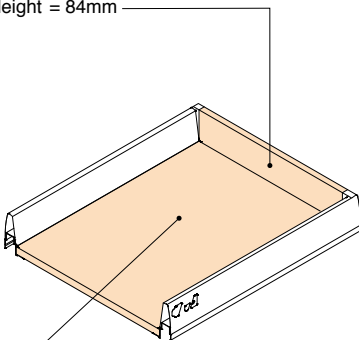
**Back Installation Dimensions**



**Cutting Dimensions for 16mm Chipboard**

■ **Back Panel**

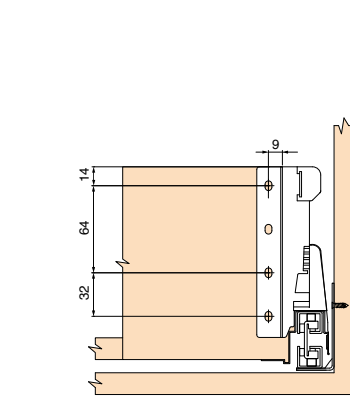
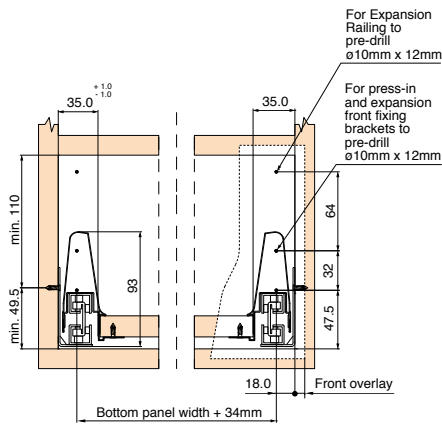
Width = Internal cabinet width - 81mm  
Height = 84mm



■ **Bottom Panel**

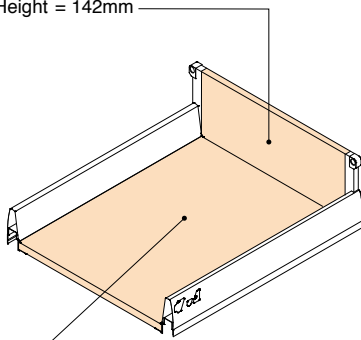
Width = Internal cabinet width - 70mm  
Length (Wooden back) = Drawer length - 24mm

**Single Railing Standard Drawer**



■ **Back Panel**

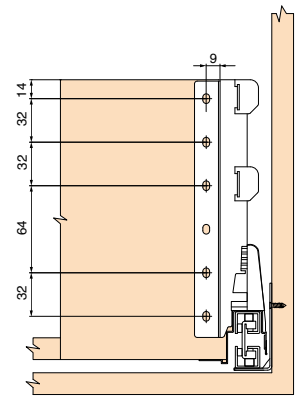
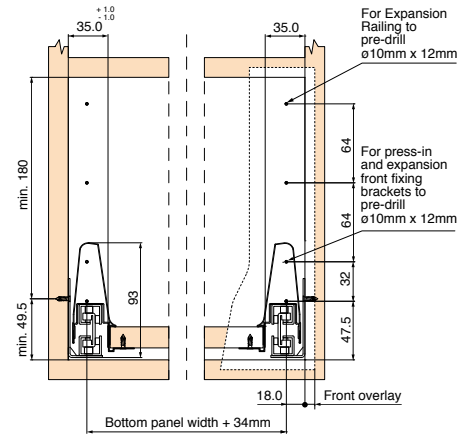
Width = Internal cabinet width - 81mm  
Height = 142mm



■ **Bottom Panel**

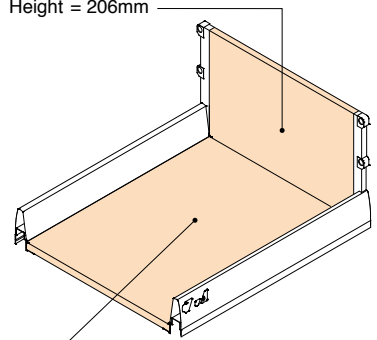
Width = Internal cabinet width - 70mm  
Length (Wooden back) = Drawer length - 24mm

**Double Railing Standard Drawer**



■ **Back Panel**

Width = Internal cabinet width - 81mm  
Height = 206mm

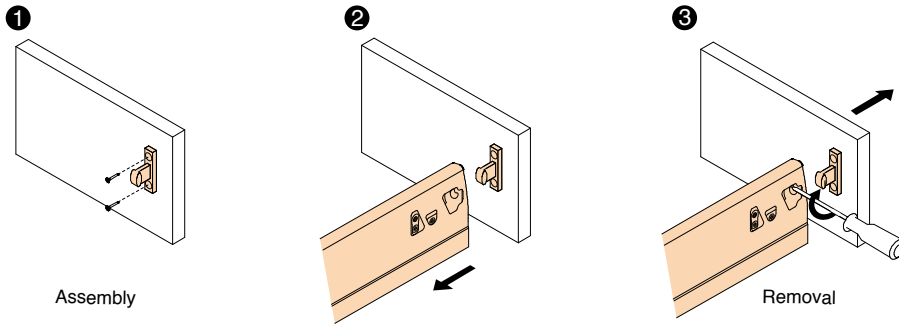


■ **Bottom Panel**

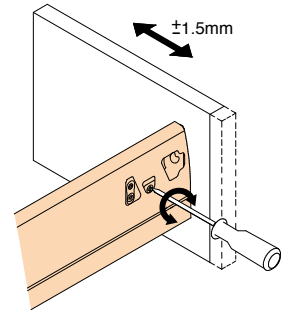
Width = Internal cabinet width - 70mm  
Length (Wooden back) = Drawer length - 24mm

# OptiBox Assembly & Adjustment

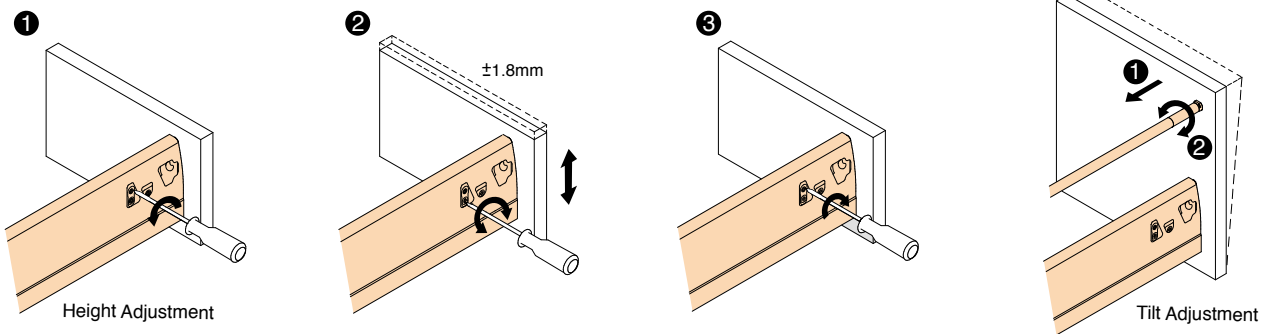
## Drawer Front Assembly & Removal



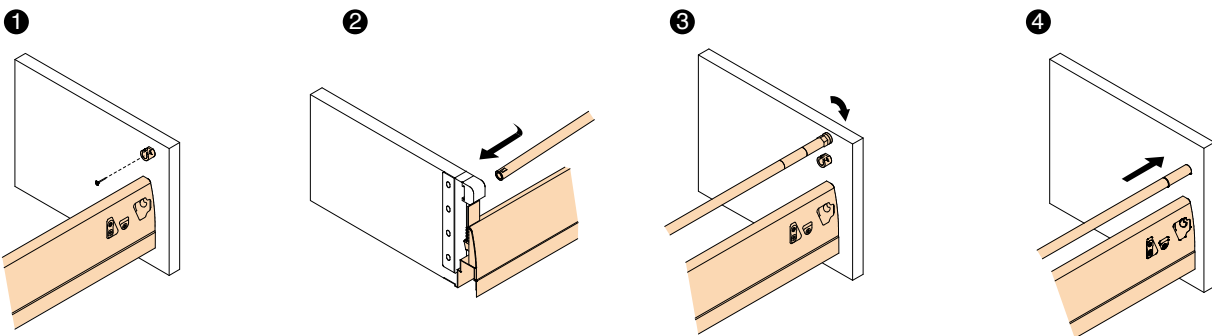
## Drawer Front - Side Adjustment



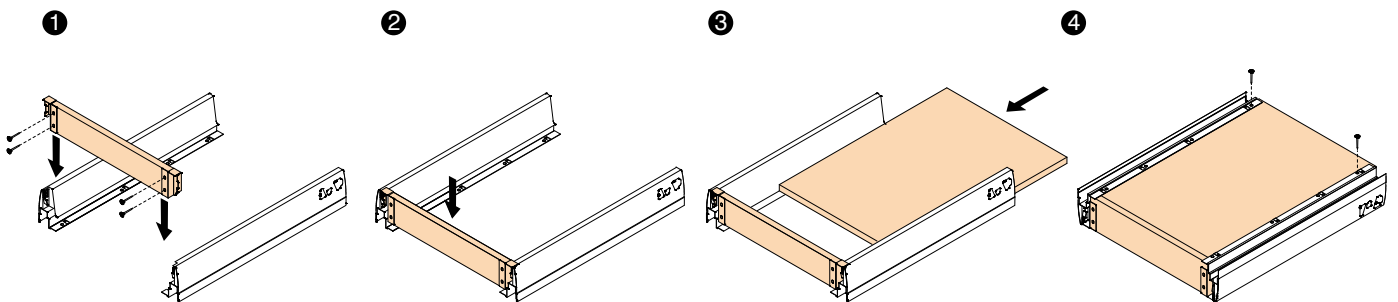
## Drawer Front - Height & Tilt Adjustment



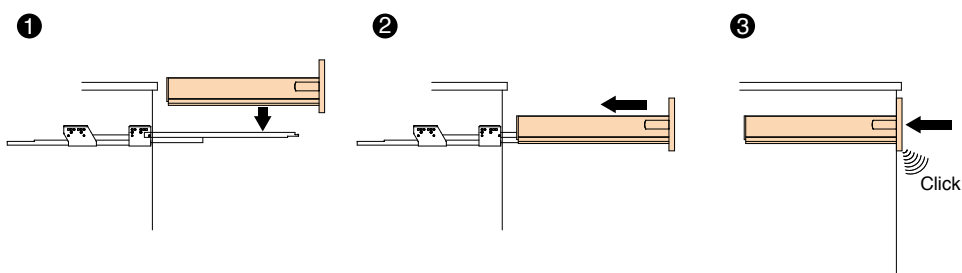
## Railing Assembly



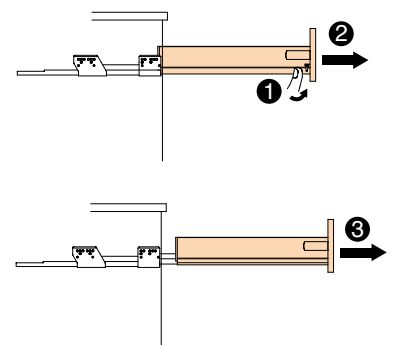
## Standard Drawer Assembly - Wooden Back



## Drawer Insertion



## Drawer Removal





**Q-FIT**®

Manufacturer :

Office & Factory Address

**Q-FIT SDN BHD** (521895-P)  
3, Jalan Industri 1, Off Jalan Jelapang,  
30020 Ipoh, Perak, Malaysia.

Tel : 605 - 527 9862, 526 8863

Fax : 605 - 527 9863

E-mail : [qfit@po.jaring.my](mailto:qfit@po.jaring.my)

Homepage : [www.qfitsb.com](http://www.qfitsb.com)

Technical feature of the products could be subject to modifications without prior notice